

The OmniAire 100V is a modular, portable air filtration system for removal of airborne hazardous contaminants. It is used for glove bags, extraction of irritating fumes on work benches and general air purification. The OA100V consists of a **Motor/Blower Module** and **HEPA Filter Module** connected by a 6" diameter flex hose. The modules can operate stacked on top of each other or set up remotely. An optional **Carbon Filter Module** can be connected in-line with the HEPA Filter Module, or in place of it, to capture fumes and vapors.

## Features & Advantages:

**HEPA Filter Module** contains a HEPA filter sealed between ABS plastic adapters for an easy in-line connection to the Motor/Blower Module and the containment. When dealing with hazardous waste, only the HEPA filter sealed inside the module would get contaminated and the whole module is easily bagged and discarded. The optional carbon filter module is constructed the same way for easy disposal. The flex hose connection to the containment is 3" or 6" diameter.

## OmniAire 100V Specifications:

### Motor/Blower Module

**Air flow:** Adjustable 40 to 100 cfm with HEPA filter  
**Housing:** Plastic ABS material with UL 94V-0 Flammability rating; 6" dia. connection sleeves on suction and discharge sides  
**Power:** 115 Volts, 60 Hz, 0.5 amp  
**Controls:** Variable speed control; hour meter  
**Size:** 12.5" x 12.5" x 13" long  
**Weight:** 8 lbs.

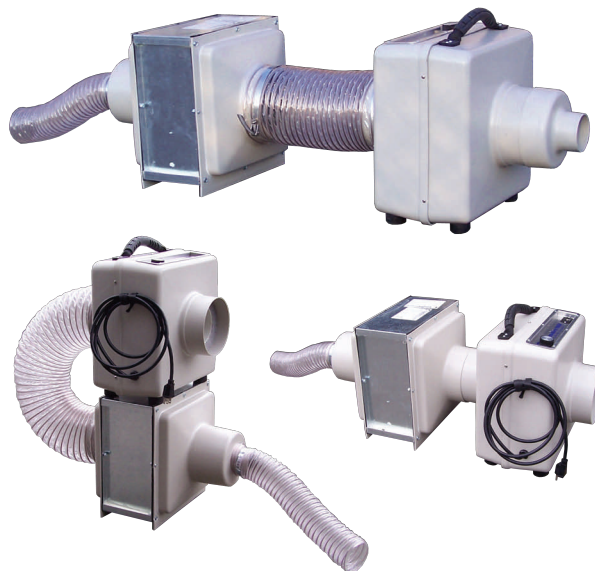
### HEPA Filter Module

**HEPA Filter:** 99.99% @ 0.3 micron efficiency, Essential construction and material to meet UL586; size 12"x12"x6", extruded aluminum frame

### Hose

**Connections:** Plastic ABS material with UL 94V-0 Flammability rating; with 6" or 3" dia. connections on suction side and 6" dia on discharge side

**Flex Hose:** 6" diameter, 4 foot long, wire reinforced  
**Size:** 12"x12"x18" long  
**Weight:** 12 lbs.



### ORDERING INFORMATION..... PART #

OmniAire 100V.....	OA100V
HEPA Filter 99.99%, 0.3µ .....	OAHM6
Carbon Filter Module .....	OCFM12
Clamp, 3" and 6" dia. hoses.....	QCW6 or 3
Flexible Duct, 6"x25' .....	OAD625
Flexible Duct, 6"x12' .....	OAD612
Flexible Duct, 3"x25' .....	OAD325
Flexible Duct, 3"x12' .....	OAD312

## Optional accessories:

**Carbon Filter Module:** Galv. Steel/Aluminum frame, 12"x12"x14" filter. Plastic hose connections are 6" and 3" dia. on suction side and 6" dia. on discharge side. ABS plastic has UL 94V-0 Flammability rating.

**Flex Hose:** 6" and 3" dia., 25 foot long, polyester-neoprene reinforced with wire, meeting UL 94V-0 Flammability rating

[www.omnitedesign.com](http://www.omnitedesign.com)

2125 196th Street SW, Suite 115, Lynnwood, WA 98036

phone 425-774-3257 fax 425-774-4983